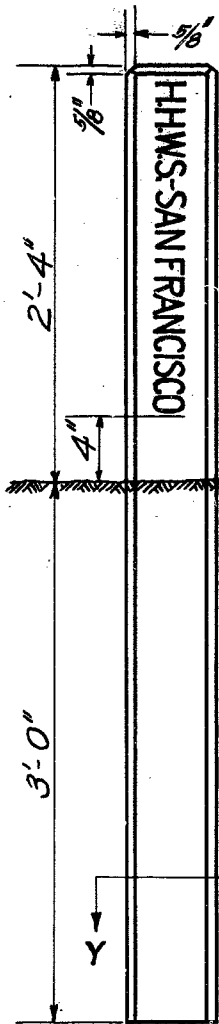


Post: Reinforced concrete 6"x6"x5'-4"

LETTERING: Inscription to be impressed as required.

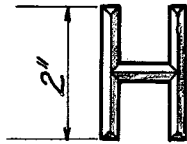
LOCATION: Set posts at intersections of Hetch Hetchy fee land or right of way lines with street lines and other property lines and at any other points where it is desirable to define the property line. Keep office record of locations of all posts set.

USE OF POST: While intended primarily for marking H. H. property lines, posts of same design with appropriate markings, may be used to mark center lines, survey monuments, etc. as desired.

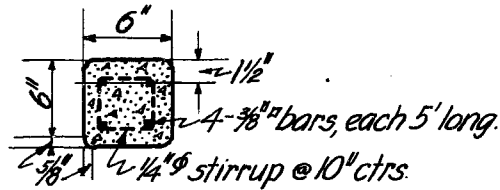
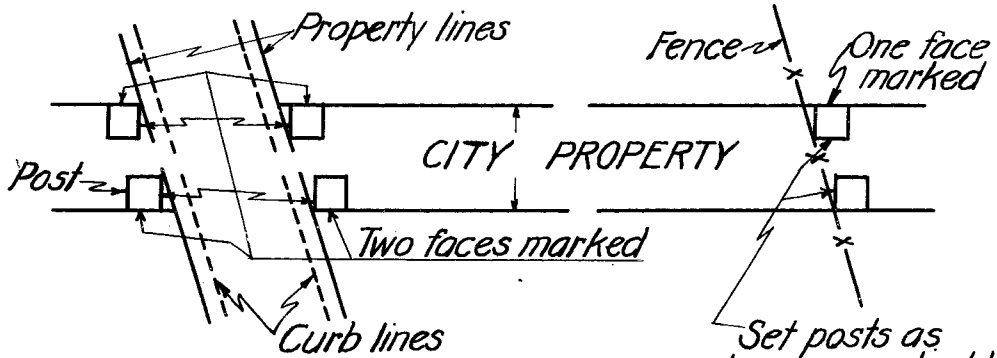


Ground surface

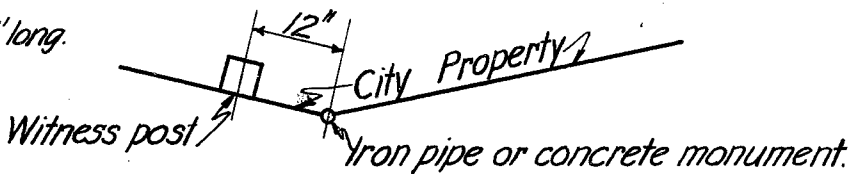
ELEVATION OF POST



TYPICAL DETAIL OF LETTER



SECTION Y-Y



Set witness post as shown above, where desirable to indicate that monuments have been set. Such posts in addition to the regular marking to be marked "MONUMENT MARKER" on the face to-ward the monument.

SAN FRANCISCO PUBLIC UTILITIES COMMISSION

HETCH HETCHY WATER SUPPLY

REINFORCED CONCRETE PROPERTY LINE POST.

INFORMATION ONLY
THIS COPY MAY
BE DISCARDED

BY R.H.O.	TR. R.W.J.	SCALE None.	DATE May 1932.	DRAWING NO.
CH. C.K.D.	OK R.L.A.	APPROVED	REVISED	A-547
APPROVED <i>W. Stocker</i>		CHIEF ENGINEER & MANAGER.		

This drawing supersedes A-435.