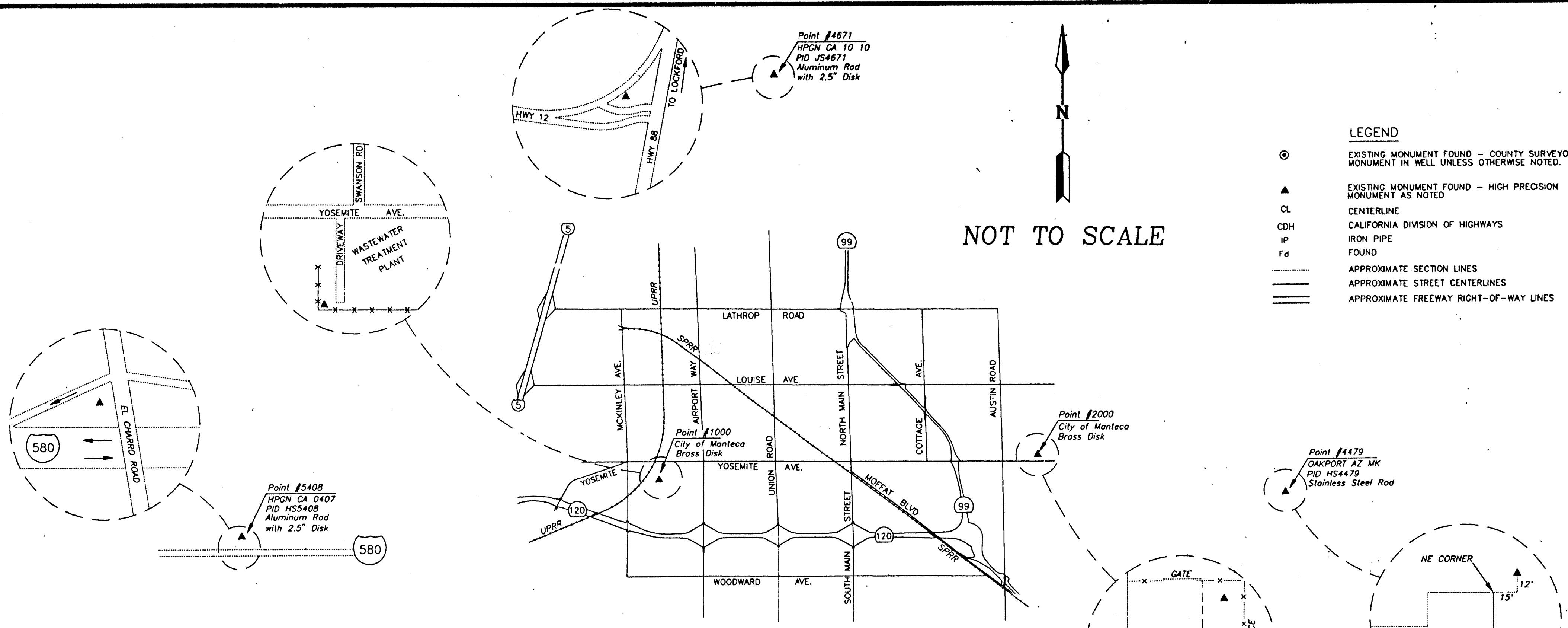


93-133



NOT TO SCALE

- LEGEND**
- ⊙ EXISTING MONUMENT FOUND - COUNTY SURVEYOR'S MONUMENT IN WELL UNLESS OTHERWISE NOTED.
 - ▲ EXISTING MONUMENT FOUND - HIGH PRECISION MONUMENT AS NOTED
 - CL CENTERLINE
 - CDH CALIFORNIA DIVISION OF HIGHWAYS
 - IP IRON PIPE
 - Fd FOUND
 - APPROXIMATE SECTION LINES
 - APPROXIMATE STREET CENTERLINES
 - APPROXIMATE FREEWAY RIGHT-OF-WAY LINES

HIGH PRECISION CONTROL NETWORK

GENERAL NOTES

1. THIS RECORD OF SURVEY IS INTENDED TO BE A MONUMENTATION MAP ONLY. IT DOES NOT DEFINE PROPERTY BOUNDARY LOCATIONS. THE SOLE PURPOSE IS TO ESTABLISH A PRIMARY HORIZONTAL CONTROL NETWORK FOR THE CITY OF MANTECA'S PROPOSED GEOGRAPHIC INFORMATION SYSTEM, CONSTRAINED TO THE CALIFORNIA HIGH PRECISION GEODETIC NETWORK USING GLOBAL POSITIONING SURVEY TECHNIQUES, AND SHOW THE LOCATION AND DESCRIPTION OF MONUMENTS FOUND, ALONG WITH THE NAD83-1992 STATE PLANE COORDINATES DETERMINED FOR THE MONUMENTS.
2. ALL GPS OBSERVATIONS WERE TAKEN ON EXISTING MONUMENTS. NO NEW MONUMENTS WERE SET AS A PART OF THIS SURVEY.
3. THE COORDINATES SHOWN ON THIS MAP ARE BASED ON THE 1992 ADJUSTMENT OF THE NORTH AMERICAN DATUM OF 1983(NAD83). DISTANCES SHOWN ON THIS MAP, OR COMPUTED FROM THE COORDINATES SHOWN HEREON ARE "GRID DISTANCES", AND SHOULD BE CONVERTED TO "GROUND" DISTANCES IN ORDER TO BE COMPATIBLE WITH MEASUREMENTS MADE ON THE GROUND USING CONVENTIONAL SURVEYING TECHNIQUES. TO OBTAIN "GROUND" DISTANCES, DIVIDE THE "GRID" DISTANCES BY THE "COMBINATION FACTOR". TO OBTAIN "GRID" DISTANCES, MULTIPLY THE "GROUND" DISTANCE BY THE "COMBINATION FACTOR". SCALE FACTORS FOR EACH POINT ARE INCLUDED IN THE COORDINATE LISTINGS.
4. COORDINATES AND DESCRIPTIONS FOR ALL POINTS SHOWN HEREON ARE LISTED IN TABLES ON SHEET 3.
5. GPS RECEIVERS USED IN THIS SURVEY WERE TRIMBLE 4000 SSE + 4000 SSI DUAL FREQUENCY RECEIVERS.
6. THE VECTOR SOLUTIONS WERE POST PROCESSED USING TRIMBLE NAVIGATION SOFTWARE GPSURVEY, THE LEAST SQUARES NETWORK ADJUSTMENT WAS PERFORMED USING TRIMBLE SOFTWARE, TRIMNET PLUS V1.20 AND STAR PLUS SOFTWARE STARNET V5.052, AND CONSTRAINED TO THE 1992 ADJUSTMENT OF THE CA HPGN NAD83 PUBLISHED COORDINATES.
7. A COMPLETE REPORT OF THE GPS SURVEY IS AVAILABLE FOR REVIEW AT THE CITY OF MANTECA PUBLIC WORKS DEPARTMENT.

RECORDER'S STATEMENT
 FILED THIS 23 DAY OF July, 1996,
 AT 9:25 A. M. IN BOOK 33 OF SURVEYS,
 AT PAGE 133, AT THE REQUEST OF THE CITY OF MANTECA.
 FEE: \$13.00

James M. Johnstone BY: Catherine Traveler
 JAMES M. JOHNSTONE COUNTY RECORDER OF SAN JOAQUIN COUNTY, CALIFORNIA
 CATHERINE TRAVELER DEPUTY RECORDER

COUNTY SURVEYOR'S STATEMENT
 THIS MAP HAS BEEN EXAMINED IN ACCORDANCE WITH SECTION 8766 OF THE LAND SURVEYORS' ACT THIS 19th DAY OF June, 1996.

Henry M. Hirata
 HENRY M. HIRATA R.C.E. 21258
 COUNTY SURVEYOR OF SAN JOAQUIN COUNTY, CALIFORNIA
 REGISTRATION EXPIRATION DATE: 9-30-97

SURVEYOR'S STATEMENT
 THIS MAP CORRECTLY REPRESENTS A SURVEY MADE BY ME OR UNDER MY DIRECTION IN CONFORMANCE WITH THE REQUIREMENTS OF THE LAND SURVEYORS' ACT AT THE REQUEST OF THE CITY OF MANTECA IN JULY OF 1995.
 DATED THIS 15th DAY OF June, 1996.

William P. Colisch
 WILLIAM P. COLISCH L.S. 6151
 EXPIRES 3-31-98

RECORD OF SURVEY
 Global Positioning Survey of Existing Section Corner Monumentation in the
CITY OF MANTECA
 SAN JOAQUIN COUNTY, CALIFORNIA
 July, 1995

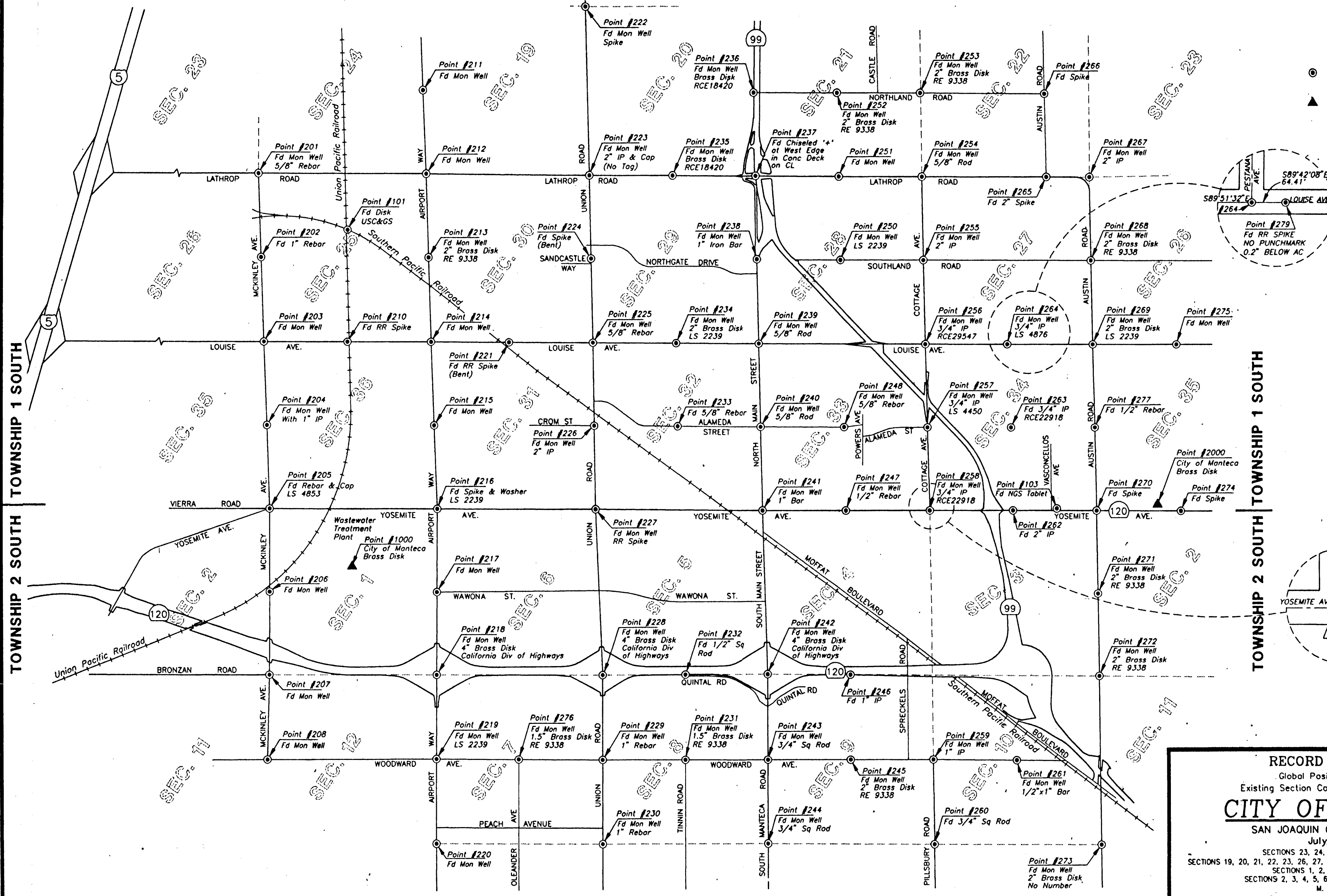
SECTIONS 23, 24, 25, 26, 35, & 36 IN T1S R6E;
 SECTIONS 19, 20, 21, 22, 23, 26, 27, 28, 29, 30, 31, 32, 33, 34, & 35 IN T1S R7E;
 SECTIONS 1, 2, 11, & 12 IN T2S R6E;
 SECTIONS 2, 3, 4, 5, 6, 7, 8, 9, 10, & 11 IN T2S R7E;
 M. D. B. & M.

CHAUDHARY & ASSOCIATES, INC.
 Engineers • Surveyors • Planners • Inspectors

3272 VILLA LANE
 NAPA, CALIFORNIA 94558
 Telephone: (707) 256-2729

01RS9514 SHEET 1 OF 3

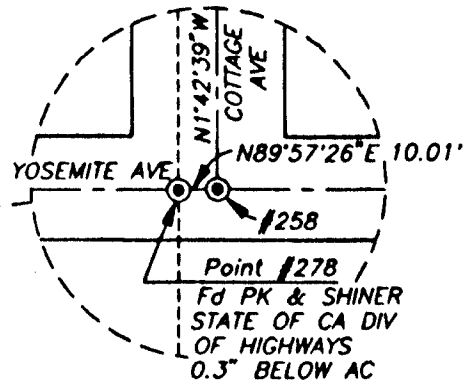
93-133



LEGEND

- ⊙ EXISTING MONUMENT FOUND - COUNTY SURVEYORS MONUMENT IN WELL UNLESS OTHERWISE NOTED
- ▲ EXISTING MONUMENT FOUND - BRASS DISK IN CONCRETE

SCALE:
1" = 2000'



RECORD OF SURVEY
Global Positioning Survey of
Existing Section Corner Monumentation in the
CITY OF MANTECA
SAN JOAQUIN COUNTY, CALIFORNIA
July, 1995

SECTIONS 19, 20, 21, 22, 23, 26, 27, 28, 29, 30, 31, 32, 33, 34, & 35 IN T1S R6E;
SECTIONS 1, 2, 11, & 12 IN T2S R6E;
SECTIONS 2, 3, 4, 5, 6, 7, 8, 9, 10, & 11 IN T2S R7E;
M. D. B. & M.

CHAUDHARY & ASSOCIATES, INC.
Engineers • Surveyors • Planners • Inspectors

3272 VILLA LANE
NAPA, CALIFORNIA 94558
Telephone: (707) 266-2729

02RS9514

33-133A

33-133A

